

Inspect the Manual Instruction & Intervention

For Families



You and the school can talk about your child's literacy profile and how literacy instruction and intervention is matched to your child's literacy needs.



Questions to ask your child's school



**How is reading taught in the school and by whom?
What reading skills do you focus on?**



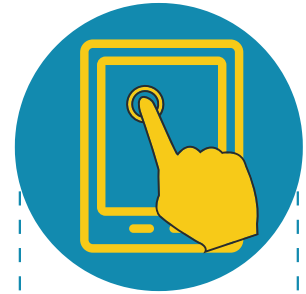
When does literacy instruction and intervention happen and for how long?



How many other children join?



How does the literacy instruction and intervention align with my child's specific literacy needs?



What school materials or trainings about literacy are available to me?